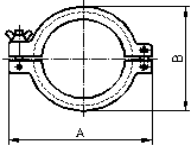
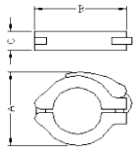


COMPONENTES ISO KF

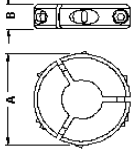
Abrazadera de anillo

	Aluminio					
	DN-KF	A	B	C	D	E
	10/16	61	45	-	-	-
	20/25	72	55	-	-	-
	32/40	90	70	-	-	-
50	123	95	-	-	-	

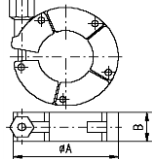
Abrazadera de sujeción rápida

	Aluminio					
	DN-KF	A	B	C	D	E
	10/16	52	70	16	-	-
	20/25	61	81	16	-	-
	32/40	75	98	18	-	-

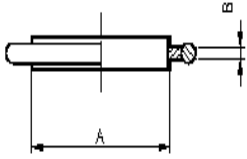
Elemento abrazadero

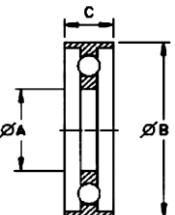
	Aluminio					
	DN-KF	A	B	C	D	E
	10/16	52	18	-	-	-
	20/25	75	20	-	-	-
	32/40	90	23	-	-	-
50	115	28	-	-	-	

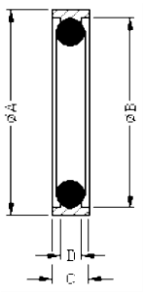
Abrazadera de resorte

	Aluminio					
	DN-KF	A	B	C	D	E
	10/16	71	18	-	-	-
	20/25	82	18	-	-	-
	32/40	98	18	-	-	-
50	117	20	-	-	-	

COMPONENTES ISO KF

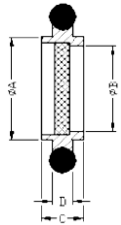
Aro de centrado						
	Acero inoxidable / FPM					
	DN-KF	A	B	C	D	E
	10	12	3,9	-	-	-
	16	17	3,9	-	-	-
	25	26	3,9	-	-	-
	40	41	3,9	-	-	-
	50	52	3,9	-	-	-
	Aluminio / Perbunan					
	DN-KF	A	B	C	D	E
	10	12	3,9	-	-	-
	16	17	3,9	-	-	-
	25	26	3,9	-	-	-
	40	41	3,9	-	-	-
	50	52	3,9	-	-	-
	Aluminio / FPM					
	DN-KF	A	B	C	D	E
	10	12	3,9	-	-	-
	16	17	3,9	-	-	-
25	26	3,9	-	-	-	
40	41	3,9	-	-	-	
50	52	3,9	-	-	-	

Aro de centrado con anillos externos						
	Acero inoxidable / FPM / Aluminio					
	DN-KF	A	B	C	D	E
	16	16	31,5	8	-	-
	25	25	41,5	8	-	-
	40	40	56,5	8	-	-
	50	50	77,5	8	-	-

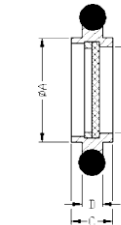
Aro de centrado externo						
	Aluminio/ Perbunan					
	DN-KF	A	B	C	D	E
	10/16	32	30,2	7	3,9	-
	20/25	42	40,2	7	3,9	-
	32/40	57	55,2	7	3,9	-
	50	77	75,2	7	3,9	-
	Aluminio / FPM					
	DN-KF	A	B	C	D	E
	10/16	32	30,2	7	3,9	-
	20/25	42	40,2	7	3,9	-
32/40	57	55,2	7	3,9	-	
50	77	75,2	7	3,9	-	

COMPONENTES ISO KF

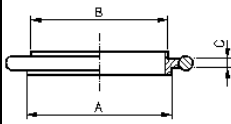
Aro de centraje con elemento filtrante

	Acero inoxidable / FPM					
	DN-KF	A	B	C	D	E
	10	12	8	8	3,9	-
	16	17	14	8	3,9	-
	25	26	23	8	3,9	-
	40	41	38	8	3,9	-
	50	52	48	8	3,9	-

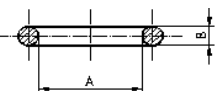
Aro de centraje con micro elemento filtrante

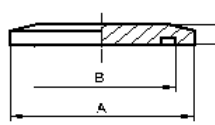
	Acero inoxidable / FPM					
	DN-KF	A	B	C	D	E
	10	12	9	8	3,9	-
	16	17	13	8	3,9	-
	25	26	22	8	3,9	-
	40	41	35,5	8	3,9	-
	50	52	45,7	8	3,9	-

Aro de centraje con reducción

	Acero inoxidable / FPM					
	DN-KF	A	B	C	D	E
	10/16	17	12	3,9	-	-
	20/25	26	22	3,9	-	-
	32/40	41	34	3,9	-	-
	Aluminio / Perbunan					
	DN-KF	A	B	C	D	E
	10/16	17	12	3,9	-	-
	20/25	26	22	3,9	-	-
	32/40	41	34	3,9	-	-
	Aluminio / FPM					
	DN-KF	A	B	C	D	E
	10/16	17	12	3,9	-	-
	20/25	26	22	3,9	-	-
	32/40	41	34	3,9	-	-

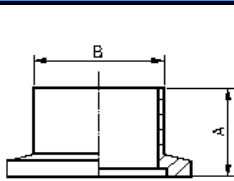
COMPONENTES ISO KF

Junta tórica						
	Perbunan					
	DN-KF	A	B	C	D	E
	10	15	5	-	-	-
	16	18	5	-	-	-
	25	28	5	-	-	-
	40	42	5	-	-	-
	50	55	5	-	-	-
	Vitón					
	DN-KF	A	B	C	D	E
	10	15	5	-	-	-
	16	18	5	-	-	-
	25	28	5	-	-	-
	40	42	5	-	-	-
50	55	5	-	-	-	

Tapón ciego						
	Aluminio					
	DN-KF	A	B	C	D	E
	10	30	12	5	-	-
	16	30	17	5	-	-
	25	40	26	5	-	-
	40	55	41	5	-	-
	50	75	52	6	-	-
	Acero inoxidable, 1.4301					
	DN-KF	A	B	C	D	E
	10	30	12	5	-	-
	16	30	17	5	-	-
	25	40	26	5	-	-
	40	55	41	5	-	-
50	75	52	6	-	-	

COMPONENTES ISO KF

Brida con casquillo de tubo corto



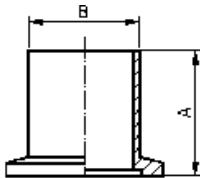
Acero, St-37

DN-KF	A	B	C	D	E
10	20	16	-	-	-
16	20	20	-	-	-
25	20	30	-	-	-
40	20	45	-	-	-
50	20	55	-	-	-

Acero inoxidable, 1.4301

DN-KF	A	B	C	D	E
10	30	16	-	-	-
16	30	20	-	-	-
25	30	30	-	-	-
40	30	45	-	-	-
50	30	54	-	-	-

Brida con casquillo de tubo especial



Acero, St37

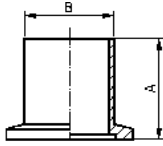
DN-KF	A	B	C	D	E
10	16	16	-	-	-
10	30	16	-	-	-
10	55	16	-	-	-
16	16	20	-	-	-
16	30	20	-	-	-
16	55	20	-	-	-
25	16	30	-	-	-
25	30	30	-	-	-
25	55	30	-	-	-
40	25	45	-	-	-
40	30	45	-	-	-
40	55	45	-	-	-
50	25	55	-	-	-

Acero inoxidable, 1.4301

DN-KF	A	B	C	D	E
10	16	16	-	-	-
10	20	16	-	-	-
10	40	16	-	-	-
10	55	16	-	-	-
16	16	20	-	-	-
16	20	20	-	-	-
16	40	20	-	-	-
25	16	30	-	-	-
25	20	30	-	-	-
25	55	30	-	-	-
40	25	45	-	-	-
40	40	45	-	-	-
50	20	55	-	-	-
50	40	55	-	-	-

COMPONENTES ISO KF

Brida con casquillo de tubo largo



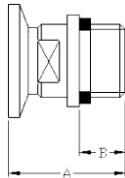
Acero, St-37

DN-KF	A	B	C	D	E
10	70	16	-	-	-
16	70	20	-	-	-
25	70	30	-	-	-
40	70	45	-	-	-
50	70	55	-	-	-

Acero inoxidable, 1.4301

DN-KF	A	B	C	D	E
10	70	16	-	-	-
16	70	20	-	-	-
25	70	30	-	-	-
40	70	45	-	-	-
50	70	55	-	-	-

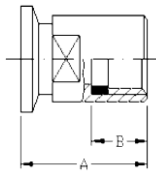
Brida de tornillo con rosca interna



Acero inoxidable, 1.4301 / FPM

DN-KF	A	B	C	D	E
10-3/8"	35	15	-	-	-
10-1/8"	35	15	-	-	-
16-1/2"	35	15	-	-	-
25-1"	45	25	-	-	-
40-1 1/2"	50	30	-	-	-

Brida de tornillo con rosca externa

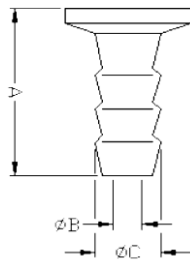


Acero inoxidable, 1.4301 / FPM

DN-KF	A	B	C	D	E
10-3/8"	35	15	-	-	-
16-1/2"	35	15	-	-	-
25-1"	45	25	-	-	-
40-1 1/2"	50	30	-	-	-

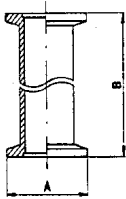
COMPONENTES ISO KF

Niple para manguera



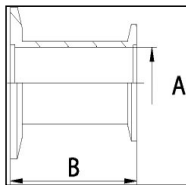
Aluminio						
DN-KF	A	B	C	D	E	
16	40	7	12	-	-	
25	40	7	12	-	-	
40	40	7	12	-	-	
Acero inoxidable						
DN-KF	A	B	C	D	E	
16	40	7	12	-	-	
25	40	7	12	-	-	
40	40	7	12	-	-	
Niple para manguera de aluminio						
DN-KF	A	B	C	D	E	
25	40	13	16	-	-	
16	40	13	16	-	-	
40	40	37	40	-	-	

Pieza intermedia



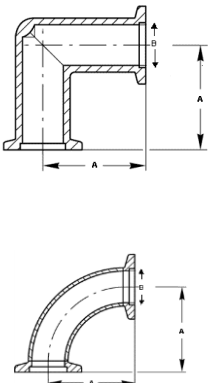
Aluminio						
DN-KF	A	B	C	D	E	
16	30	80	-	-	-	
25	40	100	-	-	-	
40	55	130	-	-	-	
Acero inoxidable						
DN-KF	A	B	C	D	E	
16	30	80	-	-	-	
25	40	100	-	-	-	
40	55	130	-	-	-	
50	75	140	-	-	-	

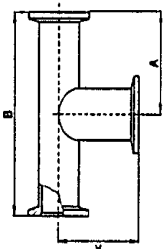
Pieza reductora

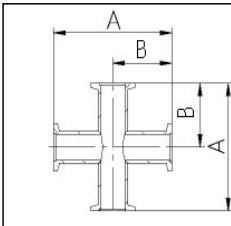


Aluminio						
DN-KF	A	B	C	D	E	
25/16	16	40	-	-	-	
40/16	16	40	-	-	-	
40/25	25	40	-	-	-	
50/40	40	40	-	-	-	
Acero inoxidable, 1.4301						
DN-KF	A	B	C	D	E	
25/16	16	40	-	-	-	
40/16	16	40	-	-	-	
40/25	26	40	-	-	-	
50/40	40	40	-	-	-	

COMPONENTES ISO KF

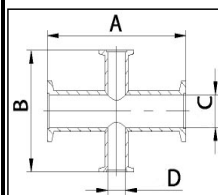
Codo 90°						
	Aluminio					
	DN-KF	A	B	C	D	E
	10	30	12	-	-	-
	16	40	16	-	-	-
	25	50	25	-	-	-
	40	65	39	-	-	-
	Acero inoxidable					
	DN-KF	A	B	C	D	E
	10	30	9	-	-	-
	16	40	15	-	-	-
	25	50	25	-	-	-
	40	65	40,5	-	-	-
	50	70	49	-	-	-

Te						
	Aluminio					
	DN-KF	A	B	C	D	E
	10	30	60	-	-	-
	16	40	80	-	-	-
	25	50	100	-	-	-
	40	65	130	-	-	-
	Acero inoxidable					
	DN-KF	A	B	C	D	E
	10	30	60	-	-	-
	16	40	80	-	-	-
	25	50	100	-	-	-
	40	65	130	-	-	-
	50	70	140	-	-	-

Cruce						
	Aluminio					
	DN-KF	A	B	C	D	E
	10	60	30	-	-	-
	16	80	40	-	-	-
	25	100	50	-	-	-
	40	130	65	-	-	-
	Acero inoxidable					
	DN-KF	A	B	C	D	E
	10	60	30	-	-	-
	16	80	40	-	-	-
	25	100	50	-	-	-
	40	130	65	-	-	-
	50	140	70	-	-	-

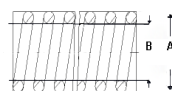
COMPONENTES ISO KF

Cruce con reducción



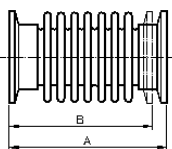
Aluminio					
DN-KF	A	B	C	D	E
25/16	70	70	25	16	-
40/16	80	90	39	16	-
Acero inoxidable					
DN-KF	A	B	C	D	E
25/16	70	70	25	17	-
40/16	80	90	40,5	16	-
50/16	100	100	53	16	-

Manguera con espiral de PVC



PVC					
DN-KF	A	B	C	D	E
16	23	15	-	-	-
25	33	25	-	-	-
40	53	40	-	-	-

Fuelle

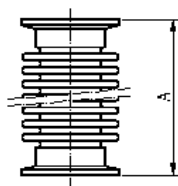


Acero inoxidable					
DN-KF	A	B	C	D	E
10	70		-	-	-
16	70	65	-	-	-
25	80	72	-	-	-
40	100	88	-	-	-
50	100	88	-	-	-

COMPONENTES ISO KF

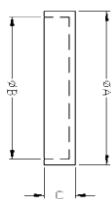
Tubo flexible

Acero inoxidable						
DN-KF	A	B	C	D	E	
10	250	-	-	-	-	
10	500	-	-	-	-	
10	750	-	-	-	-	
10	1000	-	-	-	-	
16	250	-	-	-	-	
16	500	-	-	-	-	
16	750	-	-	-	-	
16	1000	-	-	-	-	
25	250	-	-	-	-	
25	500	-	-	-	-	
25	750	-	-	-	-	
25	1000	-	-	-	-	
40	250	-	-	-	-	
40	500	-	-	-	-	
40	750	-	-	-	-	
40	1000	-	-	-	-	
50	250	-	-	-	-	
50	500	-	-	-	-	
50	750	-	-	-	-	
50	1000	-	-	-	-	



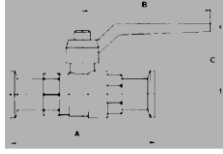
Cubierta protectora

PVC						
DN-KF	A	B	C	D	E	
10/16	32	29	7,5	-	-	
20/25	42	39	7,5	-	-	
32/40	57	54	7,5	-	-	
50	77	74	7,5	-	-	



COMPONENTES ISO KF

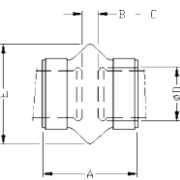
Valvula de bola



latón-niquel-estaño / Acero inoxidable

DN-KF	A	B	C	D	E
10	75	80	68	-	-
16	100	80	70	-	-
25	130	110	83	-	-
40	160	138	120	-	-

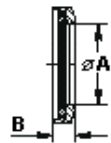
Manguito flexible de compensación



NBR

DN-KF	A	B	C	D	E
16	58	7	14	16	44
25	60	9	16	25	50
40	64	13	20	40	68

Tubo indicador



Borosilicate, FPM

DN-KF	A	B	C	D	E
25	25	10	-	-	-
40	40	10	-	-	-
50	50	10	-	-	-